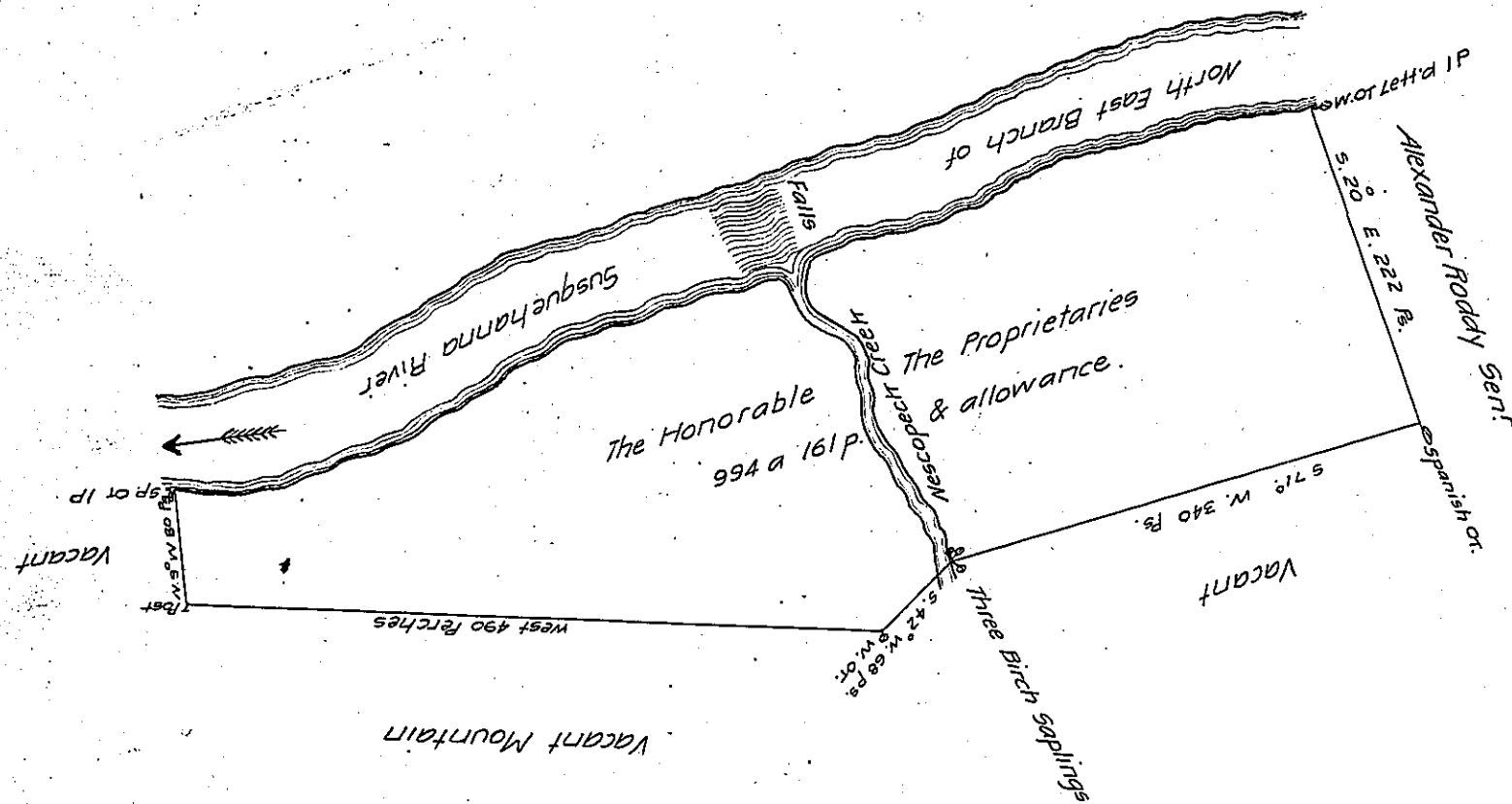


- Traverse of the River from the Sp. or to the W. or Lettered both I.P. viz
- 1. N. 88° E. 50 ps.
  - 2. N. 72° E. 70 ps
  - 3. North 60° E. 14 ps
  - 4. N. 69° E. 28 ps
  - 5. N. 53° E. 80 ps
  - 6. N. 54° E. 84 ps
  - 7. S. 83° E. 24 ps
  - 8. N. 69° E. 48 ps
  - 9. N. 83° E. 20 ps
  - 10. N. 55° E. 44 ps
  - 11. N. 76° E. 120 ps
  - 12. N. 62° E. 110 ps
  - 13. N. 80° E. 36 ps
  - 14. N. 70° E. 73 ps
  - 15. N. 85° E. 62 ps.



Scale 100 perches to an Inch.

A Draught of a Tract of Land called Nescopect Situate on the South Side of the East Branch of Susquehanna River and on both sides of a Stream of Water called Nescopect in Northampton County Containing nine hundred and ninety four acres & one hundred and sixty one perches besides the usual allowance of 6 P Cent for Roads Surveyed for the Honorable The Proprietaries of Pennsylvania In Pursuance of a Warrant dated the twenty seventh day of December 1768 Surveyed 7th & 8th Feby. 1769.

by me Chas Stewart Dep't Sur'

To John Lutrens Esq'  
Surveyr General.

IN TESTIMONY that the above is a copy of the original remaining on file in the Department of Internal Affairs of Pennsylvania, made conformably to an Act of Assembly approved the 16th day of February, 1833, I have hereunto set my Hand and caused the Seal of said Department to be affixed at Harrisburg, this

twentieth day of June 1911.

*Mercy Houch*  
Secretary of Internal Affairs.